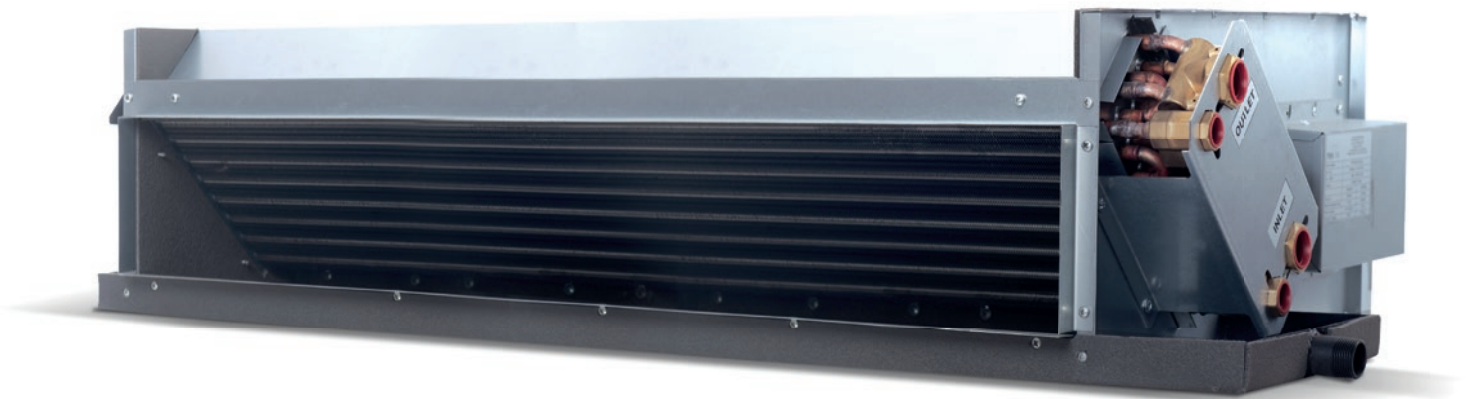




 **VENTUS**
PRO

| FVS FANCOIL UNITS





FVS SERIES FANCOIL UNITS

FVS FCU is designed as a ceiling concealed hydronic water duct fan coil unit. It has modern appearance, compact structure, low noise and large cooling (and optionally heating) capacity. A fan coil unit (FCU) contains a fan which draws the air in a space into the unit then blows it over a cold or hot coil. The air comes out of the FCU either chilled or warmer than before. Air filters at the FCU inlet catch contamination from drawn air. The FCU is not designed to handle fresh air. They are used in buildings where multiple small spaces require individual control. Usually they are applicable in hospitals, business centers, hotels, residences, shopping centres. Concealed ceiling type fan coils are produced in 2 types as standard and high pressure.

FVS - C series is designed for standard ESP fancoil

- » FVS - C is produced in 13 models with 2 pipes (cooler and heater) and 4 pipes (cooler and heater)

FVS - HP series is designed for high pressure fancoil

- » FVS - HP is produced in 5 models with 2 pipes (cooler and heater) and 4 pipes (cooler and heater)

FVS - EC series EC Fancoils

- » FVS - EC is produced in 7 models with 2 pipes (cooler and heater) and 4 pipes (cooler and heater)

FVS - DC series District Cooling Fancoils

- » FVS - DC is produced in 5 models with 2 pipes (cooler and heater) and 4 pipes (cooler and heater)

MODERN AND ENERGY SAVING DESIGN

- » Low energy consumption
- » High comfort of use
- » Low noise level
- » Compact and original design
- » Easy assembly
- » Electronic control option

TECHNICAL SPECIFICATIONS

CASE

A galvanized steel sheet is used in fan coil units of the FVS FCU series. The case structure is designed in such a way as to be very durable and resistant to deformation, and prevent the occurrence of vibrations.

The condensation tray is used in all 2-pipe and 4-pipe models. PE insulation is used in the condensation tray and on the outer surface of the main housing after the cooler to prevent condensation. The applied insulation also reduces the level of sound generated by the fan, what ensures quiet operation of the whole device.



FANS

FVS-C, FVS-HP series - apply radial fans with static and dynamic balance, maximum efficiency and optimum sound level with 3-speed directly coupled motors are used.

FVS-EC, FVS-DC series - apply apply radial fans with static and dynamic balance, maximum efficiency and optimum sound level and directly coupled motors are used. Fans are driven by high efficiency EC motors..

COIL

Copper pipe - aluminum fins and brass collector battery with low pressure losses are used as standard. In addition, the battery is positioned at an angle of 45° to the blowing direction in order to obtain maximum efficiency from the device.

FILTER

Through to specially designed slides, anti-bacterial filters are used, which can be removed and installed and can also be washed.

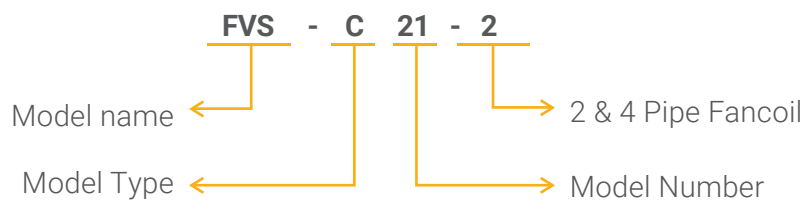
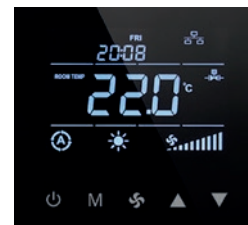
ACCESSORIES

Heating coil for 4-pipe fancoil. Wall mounted analog thermostat. Wall mounted digital thermostat.

FVS-C, FVS-HP



FVS-EC, FVS-DC





TECHNICAL SPECIFICATIONS

FANCOIL UNITS FVS-C, FVS-HP, 2 pipes

Model	7-12°C	90-70°C	Air Flow [m³/h]	Water Inlet/Outlet [Inch]	Drain [Inch]	Absolute Motor Power [W]	Max. Current [A]	Weight [kg]	Quantities of per container -
	Capacity [kW]	Capacity [kW]							
FVS-C21-2	2,26	6,39	500	3/4"-3/4"	3/4"	53	0,26	14,1	336
FVS-C23-2	2,6	7,86	510	3/4"-3/4"	3/4"	59	0,27	14,1	336
FVS-C26-2	2,78	8,44	560	3/4"-3/4"	3/4"	57	0,26	14,7	336
FVS-C29-2	3	9,03	550	3/4"-3/4"	3/4"	68	0,35	15,1	336
FVS-C37-2	3,98	11,26	930	3/4"-3/4"	3/4"	66	0,3	20,7	240
FVS-C42-2	4,23	12,01	1020	3/4"-3/4"	3/4"	70	0,32	20,7	240
FVS-C49-2	4,73	13,44	1100	3/4"-3/4"	3/4"	90	0,41	21,1	240
FVS-C51-2	4,85	13,83	1140	3/4"-3/4"	3/4"	97	0,42	21,1	240
FVS-C58-2	6,27	18,34	1130	3/4"-3/4"	3/4"	99	0,45	21,9	240
FVS-C65-2	7,59	22,23	1560	3/4"-3/4"	3/4"	129	0,71	32,8	168
FVS-C76-2	8,32	24,53	1800	3/4"-3/4"	3/4"	156	0,71	33,8	168
FVS-C89-2	10,01	29,89	2000	3/4"-3/4"	3/4"	141	0,64	39,4	120
FVS-C102-2	10,79	32,38	2240	3/4"-3/4"	3/4"	184	0,84	40,2	120
FVS-HP42	7,12	22,29	1457	1"-1"	3/4"	251	1,67	28	188
FVS-HP52	10,31	35,71	2591	1"-1"	3/4"	589	3,34	40	144
FVS-HP62	12,98	42,02	2849	1"-1"	3/4"	632	3,34	44	120
FVS-HP72	14,72	45,36	2876	1"-1"	3/4"	643	3,34	48	100
FVS-HP82	20,73	63,04	4216	1"-1"	3/4"	785	5,01	52	88

All values in the capacity table are calculated according to the High Fan speed.

FANCOIL UNITS FVS-C, FVS-HP, 4 pipes

Model	7-12°C	90-70°C	Air Flow [m³/h]	Cooling Water Inlet/ Outlet [Inch]	Heating Water Inlet/ Outlet [Inch]	Drain [Inch]	Absolute Motor Power [W]	Max. Current [A]	Weight [kg]	Quantities of per container -
	Capacity [kW]	Capacity [kW]								
FVS-C21-4	2,49	3,11	480	3/4"-3/4"	1/2"-1/2"	3/4"	57	0,26	15,9	336
FVS-C23-4	2,51	3,13	485	3/4"-3/4"	1/2"-1/2"	3/4"	59	0,27	15,9	336
FVS-C26-4	2,69	3,34	535	3/4"-3/4"	1/2"-1/2"	3/4"	57	0,26	16,5	336
FVS-C29-4	2,91	3,75	525	3/4"-3/4"	1/2"-1/2"	3/4"	68	0,31	17	336
FVS-C37-4	4,36	5,31	890	3/4"-3/4"	1/2"-1/2"	3/4"	66	0,35	23,3	240
FVS-C42-4	4,64	5,6	975	3/4"-3/4"	1/2"-1/2"	3/4"	70	0,35	23,3	240
FVS-C49-4	5,19	6,38	1050	3/4"-3/4"	1/2"-1/2"	3/4"	86	0,5	23,8	240
FVS-C51-4	5,32	6,56	1090	3/4"-3/4"	1/2"-1/2"	3/4"	90	0,5	23,8	240
FVS-C58-4	6,08	7,76	1080	3/4"-3/4"	1/2"-1/2"	3/4"	92	0,5	24,8	240
FVS-C65-4	7,36	8,84	1490	3/4"-3/4"	1/2"-1/2"	3/4"	123	0,63	36,5	168
FVS-C76-4	8,1	9,6	1725	3/4"-3/4"	1/2"-1/2"	3/4"	128	0,85	37,5	168
FVS-C89-4	9,74	12,44	1920	3/4"-3/4"	1/2"-1/2"	3/4"	132	0,7	43,2	120
FVS-C102-4	10,5	12,92	2150	3/4"-3/4"	1/2"-1/2"	3/4"	170	1	44	120
FVS-HP44	6,86	9,21	1378	1"-1"	1/2"-1/2"	3/4"	251	1,67	29	188
FVS-HP54	9,93	14,99	2449	1"-1"	1/2"-1/2"	3/4"	589	3,34	41	144
FVS-HP64	13,39	18,14	2992	1"-1"	1/2"-1/2"	3/4"	632	3,34	45	120
FVS-HP74	15,2	20,2	3020	1"-1"	1/2"-1/2"	3/4"	643	3,34	50	100
FVS-HP84	21,39	27,18	4427	1"-1"	1/2"-1/2"	3/4"	785	5,01	54	88

All values in the capacity table are calculated according to the High Fan speed, 0Pa external static pressure for FVS-C serie, 50Pa external static pressure for FVS-HP serie and 27°C %50RH in cooling & 20°C %50RH in heating air entering conditions.

SOUND PARAMETERS

FANCOIL UNITS FVS-C, FVS-HP, 2 pipes

Model	Low Fan speed step		Medium Fan speed step		High Fan speed step	
	Sound Power Level Lw [dB(A)]	Sound Pressure Level L [dB(A)]	Sound Power Level Lw [dB(A)]	Sound Pressure Level L [dB(A)]	Sound Power Level Lw [dB(A)]	Sound Pressure Level L [dB(A)]
FVS-C21-2	40	32	48	39	56	45
FVS-C23-2	40	32	50	41	56	45
FVS-C26-2	43	35	51	42	57	46
FVS-C29-2	45	37	53	44	57	46
FVS-C37-2	47	39	53	44	58	47
FVS-C42-2	50	42	54	45	58	47
FVS-C49-2	51	43	55	46	60	49
FVS-C51-2	53	45	60	51	61	50
FVS-C58-2	53	45	60	51	61	50
FVS-C65-2	55	47	61	52	63	52
FVS-C76-2	56	48	61	52	64	53
FVS-C89-2	58	50	62	53	64	53
FVS-C102-2	60	52	64	55	65	54
FVS-HP42	55	47	60	51	64	53
FVS-HP52	55	47	60	51	64	53
FVS-HP62	59	51	63	54	68	57
FVS-HP72	61	53	66	57	71	60
FVS-HP82	63	55	68	59	74	63

Sound pressure level according to ISO 3741 at 1 meter from the unit.

FANCOIL UNITS FVS-C, FVS-HP, 4 pipes

Model	Low Fan speed step		Medium Fan speed step		High Fan speed step	
	Sound Power Level Lw [dB(A)]	Sound Pressure Level L [dB(A)]	Sound Power Level Lw [dB(A)]	Sound Pressure Level L [dB(A)]	Sound Power Level Lw [dB(A)]	Sound Pressure Level L [dB(A)]
FVS-C21-4	40	32	48	39	56	45
FVS-C23-4	40	32	50	41	56	45
FVS-C26-4	43	35	51	42	57	46
FVS-C29-4	45	37	53	44	57	46
FVS-C37-4	47	39	53	44	58	47
FVS-C42-4	50	42	54	45	58	47
FVS-C49-4	51	43	55	46	60	49
FVS-C51-4	53	45	60	51	61	50
FVS-C58-4	53	45	60	51	61	50
FVS-C65-4	55	47	61	52	63	52
FVS-C76-4	56	48	61	52	64	53
FVS-C89-4	58	50	62	53	64	53
FVS-C102-4	60	52	64	55	65	54
FVS-HP44	55	47	60	51	64	53
FVS-HP54	55	47	60	51	64	53
FVS-HP64	59	51	63	54	68	57
FVS-HP74	61	53	66	57	71	60
FVS-HP84	63	55	68	59	74	63

Sound pressure level according to ISO 3741 at 1 meter from the unit.



TECHNICAL SPECIFICATIONS

FANCOIL UNITS FVS-DC, 2 pipes

Model	5.5-14.5°C	90-70°C	Air Flow [m³/h]	Water Inlet/Outlet [Inch]	Drain [Inch]	Absolute Motor Power [W]	Max. Current [A]	Weight [kg]	Quantities of per container -
	Capacity [kW]	Capacity [kW]							
FVS-DC-HP42	8,68	27,31	1503	1"-1"	3/4"	251	1,67	28	188
FVS-DC-HP52	14,14	46,38	2730	1"-1"	3/4"	589	3,34	40	144
FVS-DC-HP62	16,94	52,32	2925	1"-1"	3/4"	632	3,34	44	120
FVS-DC-HP72	17,92	55,33	2980	1"-1"	3/4"	643	3,34	48	100
FVS-DC-HP82	23,07	76,36	4350	1"-1"	3/4"	785	5,01	52	88

FANCOIL UNITS FVS-EC, 2 pipes

Model	7-12°C	90-70°C	Air Flow [m³/h]	Water Inlet/Outlet [Inch]	Drain [Inch]	Absolute Motor Power [W]	Max. Current [A]	Weight [kg]	Quantities of per container -
	Capacity [kW]	Capacity [kW]							
FVS-EC-C23-2	3	9,14	630	3/4"-3/4"	3/4"	93	0,35	14,1	336
FVS-EC-C29-2	3,37	10,22	651	3/4"-3/4"	3/4"	93	0,35	15,1	336
FVS-EC-C42-2	5,17	14,87	1399	3/4"-3/4"	3/4"	97	0,36	20,7	240
FVS-EC-C51-2	5,67	16,35	1456	3/4"-3/4"	3/4"	103	0,39	21,1	240
FVS-EC-C58-2	7,88	23,5	1594	3/4"-3/4"	3/4"	174	0,65	21,9	240
FVS-EC-C89-2	10,71	32,12	2214	3/4"-3/4"	3/4"	185	0,69	39,4	120
FVS-EC-C102-2	13,51	41,17	3188	3/4"-3/4"	3/4"	349	1,3	40,2	120

FANCOIL UNITS FVS-EC, 4 pipes

Model	7-12°C	90-70°C	Air Flow [m³/h]	Cooling Water Inlet/ Outlet [Inch]	Heating Water Inlet/ Outlet [Inch]	Drain [W]	Absolute Motor Power [A]	Max. Current [kg]	Weight -	Quantities of per container -
	Capacity [kW]	Capacity [kW]								
FVS-EC-C23-4	2,89	3,53	597	3/4"-3/4"	1/2"-1/2"	3/4"	93	0,35	15,9	336
FVS-EC-C29-4	3,17	4,04	596	3/4"-3/4"	1/2"-1/2"	3/4"	93	0,35	17	336
FVS-EC-C42-4	5,32	6,31	1206	3/4"-3/4"	1/2"-1/2"	3/4"	97	0,36	23,3	240
FVS-EC-C51-4	4,98	6,2	986	3/4"-3/4"	1/2"-1/2"	3/4"	103	0,39	23,8	240
FVS-EC-C58-4	7,25	9,04	1404	3/4"-3/4"	1/2"-1/2"	3/4"	174	0,65	24,8	240
FVS-EC-C89-4	11,87	14,77	2592	3/4"-3/4"	1/2"-1/2"	3/4"	185	0,69	43,2	120
FVS-EC-C102-4	12,48	15,01	2808	3/4"-3/4"	1/2"-1/2"	3/4"	349	1,3	44	120

DIMENSIONS

				A [m]	B [m]	C [m]	D [m]	E [m]
FVS-C21-2	FVS-C21-4			480	530	642	672	505
FVS-C23-2	FVS-C23-4	FVS-EC-C23-2	FVS-EC-C23-4	480	530	642	672	505
FVS-C26-2	FVS-C26-4			480	530	642	672	505
FVS-C29-2	FVS-C29-4	FVS-EC-C29-2	FVS-EC-C29-4	480	530	642	672	505
FVS-C37-2	FVS-C37-4			830	880	992	1022	855
FVS-C42-2	FVS-C42-4	FVS-EC-C42-2	FVS-EC-C42-4	830	880	992	1022	855
FVS-C49-2	FVS-C49-4			830	880	992	1022	855
FVS-C51-2	FVS-C51-4	FVS-EC-C51-2	FVS-EC-C51-4	830	880	992	1022	855
FVS-C58-2	FVS-C58-4	FVS-EC-C58-2	FVS-EC-C58-4	910	960	1072	1102	935
FVS-C65-2	FVS-C65-4			1310	1360	1472	1502	1335
FVS-C76-2	FVS-C76-4			1310	1360	1472	1502	1335
FVS-C89-2	FVS-C89-4	FVS-EC-C89-2	FVS-EC-C89-4	1660	1710	1822	1852	1685
FVS-C102-2	FVS-C102-4	FVS-EC-C102-2	FVS-EC-C102-4	1660	1710	1822	1852	1685
FVS-HP42	FVS-HP44	FVS-DC-HP42		510	560	672	702	535
FVS-HP52	FVS-HP54	FVS-DC-HP52		710	760	872	902	735
FVS-HP62	FVS-HP64	FVS-DC-HP62		910	960	1072	1102	935
FVS-HP72	FVS-HP74	FVS-DC-HP72		1110	1160	1272	1302	1135
FVS-HP82	FVS-HP84	FVS-DC-HP82		1310	1360	1472	1502	1335



SOUND PARAMETERS

FANCOIL UNITS FVS-DC, 2 pipes

Model	Low Fan speed step		Medium Fan speed step		High Fan speed step	
	Sound Power Level Lw [dB(A)]	Sound Pressure Level L [dB(A)]	Sound Power Level Lw [dB(A)]	Sound Pressure Level L [dB(A)]	Sound Power Level Lw [dB(A)]	Sound Pressure Level L [dB(A)]
FVS-DC-HP42	55	47	60	51	64	53
FVS-DC-HP52	55	47	60	51	64	53
FVS-DC-HP62	59	51	63	54	68	57
FVS-DC-HP72	61	53	66	57	71	60
FVS-DC-HP82	63	55	68	59	74	63

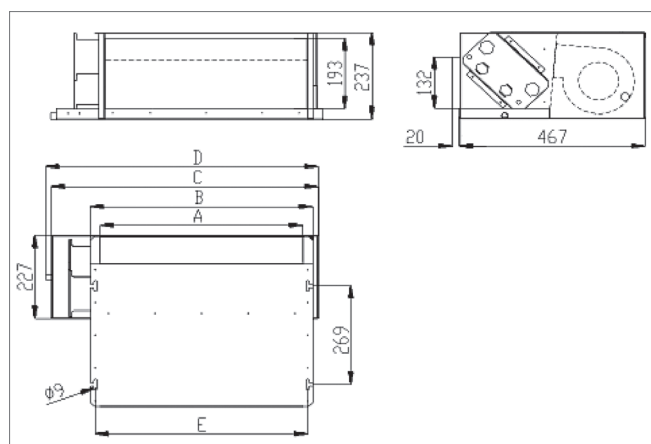
FANCOIL UNITS FVS-EC, 2 pipes

Model	Low Fan speed step		Medium Fan speed step		High Fan speed step	
	Sound Power Level Lw [dB(A)]	Sound Pressure Level L [dB(A)]	Sound Power Level Lw [dB(A)]	Sound Pressure Level L [dB(A)]	Sound Power Level Lw [dB(A)]	Sound Pressure Level L [dB(A)]
FVS-EC-C23-2	39	31	48	39	54	43
FVS-EC-C29-2	43	35	51	42	55	44
FVS-EC-C42-2	49	41	53	44	56	45
FVS-EC-C51-2	51	43	58	49	60	49
FVS-EC-C58-2	51	43	58	49	60	49
FVS-EC-C89-2	57	49	61	52	62	51
FVS-EC-C102-2	58	50	62	53	64	53

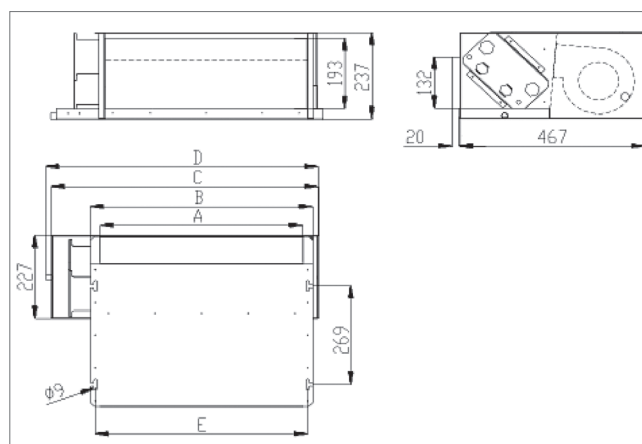
FANCOIL UNITS FVS-EC, 4 pipes

Model	Low Fan speed step		Medium Fan speed step		High Fan speed step	
	Sound Power Level Lw [dB(A)]	Sound Pressure Level L [dB(A)]	Sound Power Level Lw [dB(A)]	Sound Pressure Level L [dB(A)]	Sound Power Level Lw [dB(A)]	Sound Pressure Level L [dB(A)]
FVS-EC-C23-4	39	31	48	39	54	43
FVS-EC-C29-4	43	35	51	42	55	44
FVS-EC-C42-4	49	41	53	44	56	45
FVS-EC-C51-4	51	43	58	49	60	49
FVS-EC-C58-4	51	43	58	49	60	49
FVS-EC-C89-4	57	49	61	52	62	51
FVS-EC-C102-4	58	50	62	53	64	53

Sound pressure level according to ISO 3741 at 1 meter from the unit.



FVS-C21 ... FVS-C102



FVS-HP42 ... FVS-HP82
FVS-HP44 ... FVS-HP84



UAB "VTS Vilnius"

Rygos g. 6-34

LT-05270 **Vilnius, Lithuania**

Phone +370 (5) 263 61 52

Fax +370 (5) 263 61 56

vilnius@vtsgroup.com

VTS Latvia SIA

Bieķensalas iela 21, B218

Rīga, LV-1004, Latvia

Phone + 371 67382530

latvia@vtsgroup.com

VTS Clima OÜ

Teaduspargi 6/1

12618 **Tallinn, Eesti**

Phone +372 622 9010

estonia@vtsgroup.com

Due to continuous improvement of the products, VTS reserves right to implement modifications.
Some of technical data and descriptions may vary from the actual products specification.
Before placing the order, please, confirm all technical specification with VTS sales representative.

www.vtsgroup.com