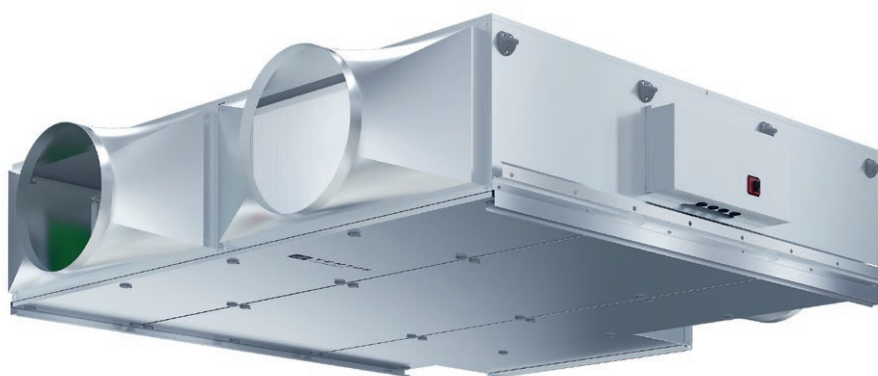




ventus

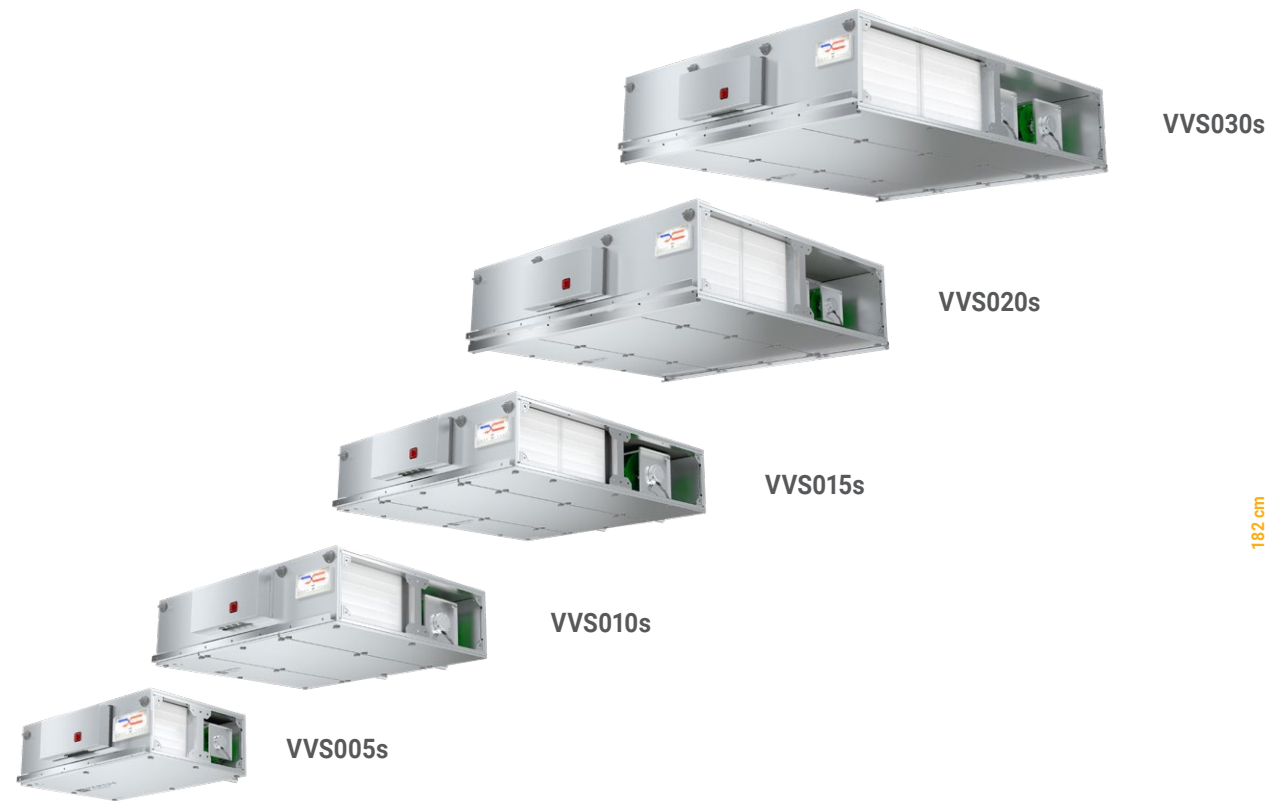
COMPACT
2021



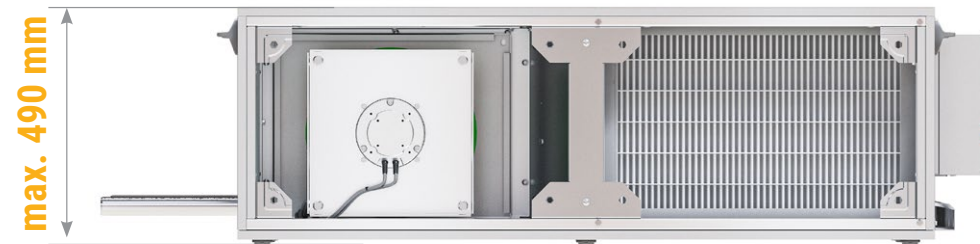
VENTUS MANAGEMENT SYSTEM



SUSPENDED AIR HANDLING UNITS



← 150 m³/h - airflow range - 3300 m³/h →

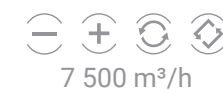


FLOOR MOUNTED AIR HANDLING UNITS

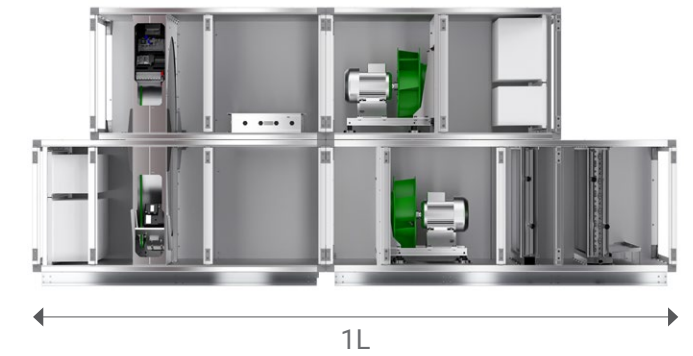
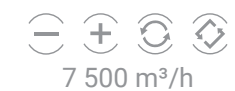


← 840 m³/h - airflow range - 16 500 m³/h →

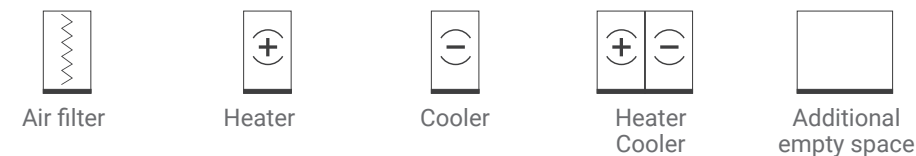
> VENTUS Compact



> Standard Air Handling Units



ADDITIONAL AIR TREATMENT FUNCTIONS



VENTUS COMPACT SUSPENDED AIR HANDLING UNITS

A

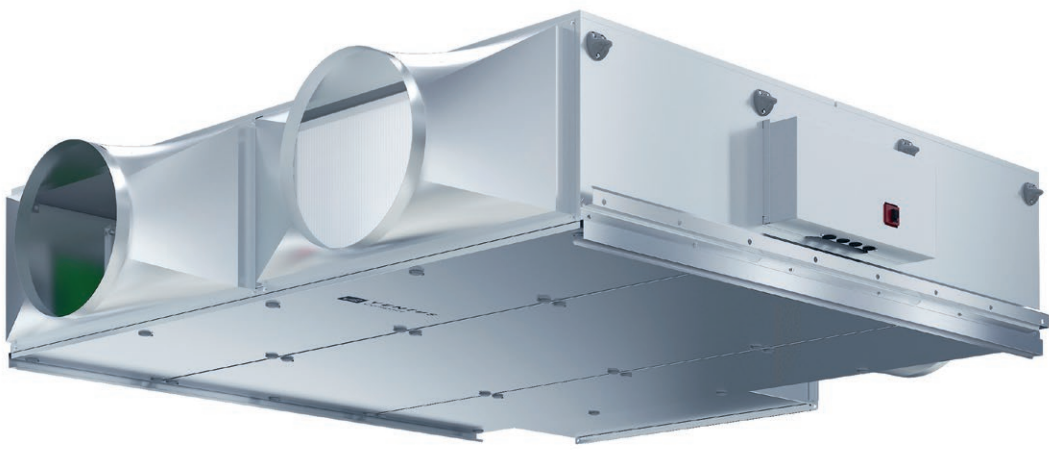
B

C

D

E

up to **93%**
recovery efficiency



VENTUS COMPACT FLOOR MOUNTED AIR HANDLING UNITS

A

B

C

D

E

up to **86%**
recovery efficiency

A

B

C

D

E

up to **93%**
recovery efficiency



VENTUS Compact
with rotary heat exchanger

VENTUS Compact
with hex counter-flow heat exchanger



MINERAL WOOL
INSULATION



HIGHLY EFFICIENT HEX
COUNTER-FLOW
HEAT RECOVERY



ENERGY SAVING
AND SILENT FANS
WITH EC MOTORS



PLUG&PLAY
PRODUCT



INTEGRATED
MULTIFUNCTIONAL
CONTROLS



MINERAL WOOL
INSULATION



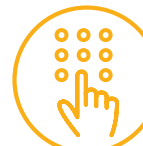
HIGHLY EFFICIENT
ROTARY AND
HEX COUNTER-FLOW
HEAT EXCHANGER



ENERGY SAVING
AND SILENT FANS
WITH EC MOTORS

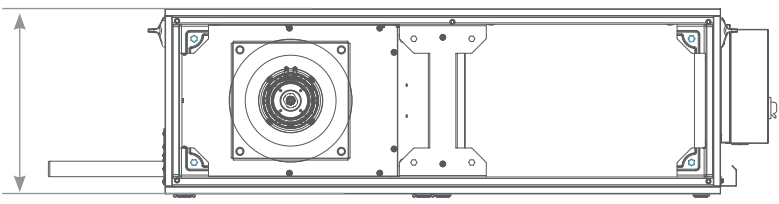


PLUG&PLAY
PRODUCT

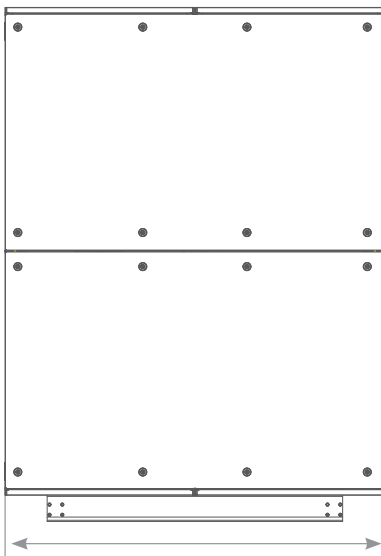
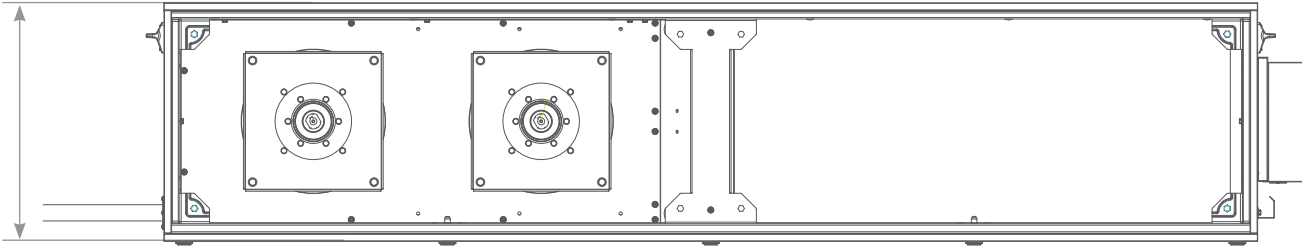


INTEGRATED
MULTIFUNCTIONAL
CONTROLS

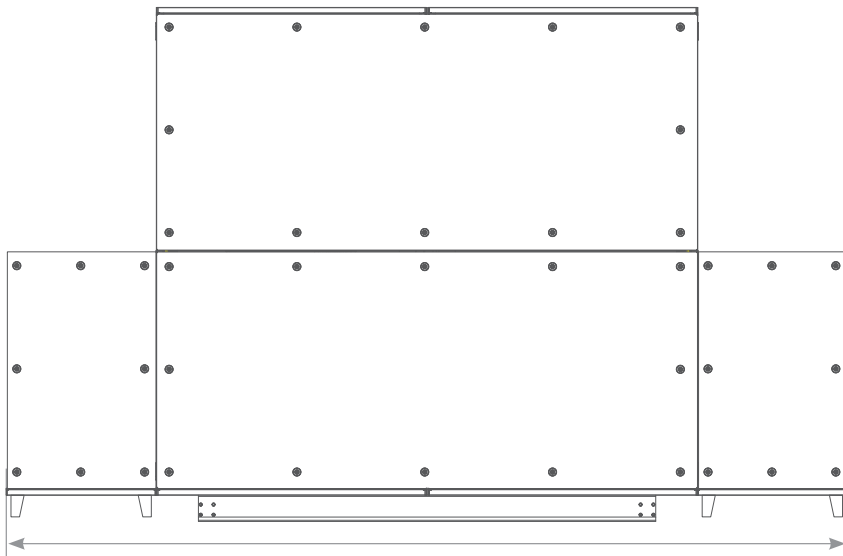
min. 400 mm



max. 490 mm



max. 1400 mm

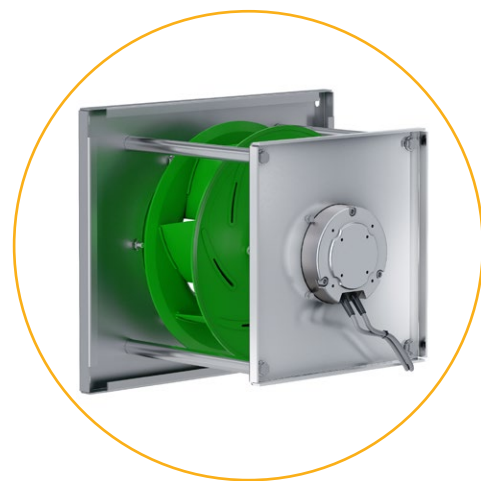
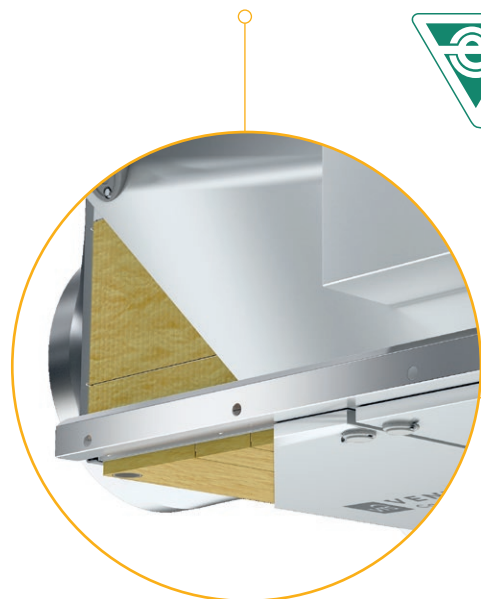


max. 2940 mm

VENTUS COMPACT SUSPENDED AIR HANDLING UNITS

CASING

- » Panels filled with mineral wool, enclosed with steel sheet on both sides.
- » Casing parameters according to EN 1886: T2, TB3, L1, D1, F9.



EC MOTORS

Efficient, silent and low vibrations fan with electronically commutated motor in a IE4 class.

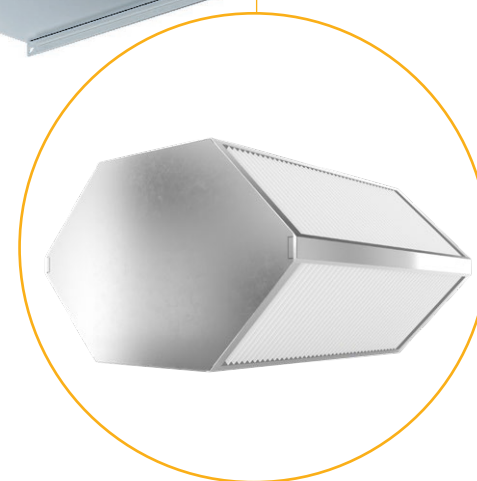
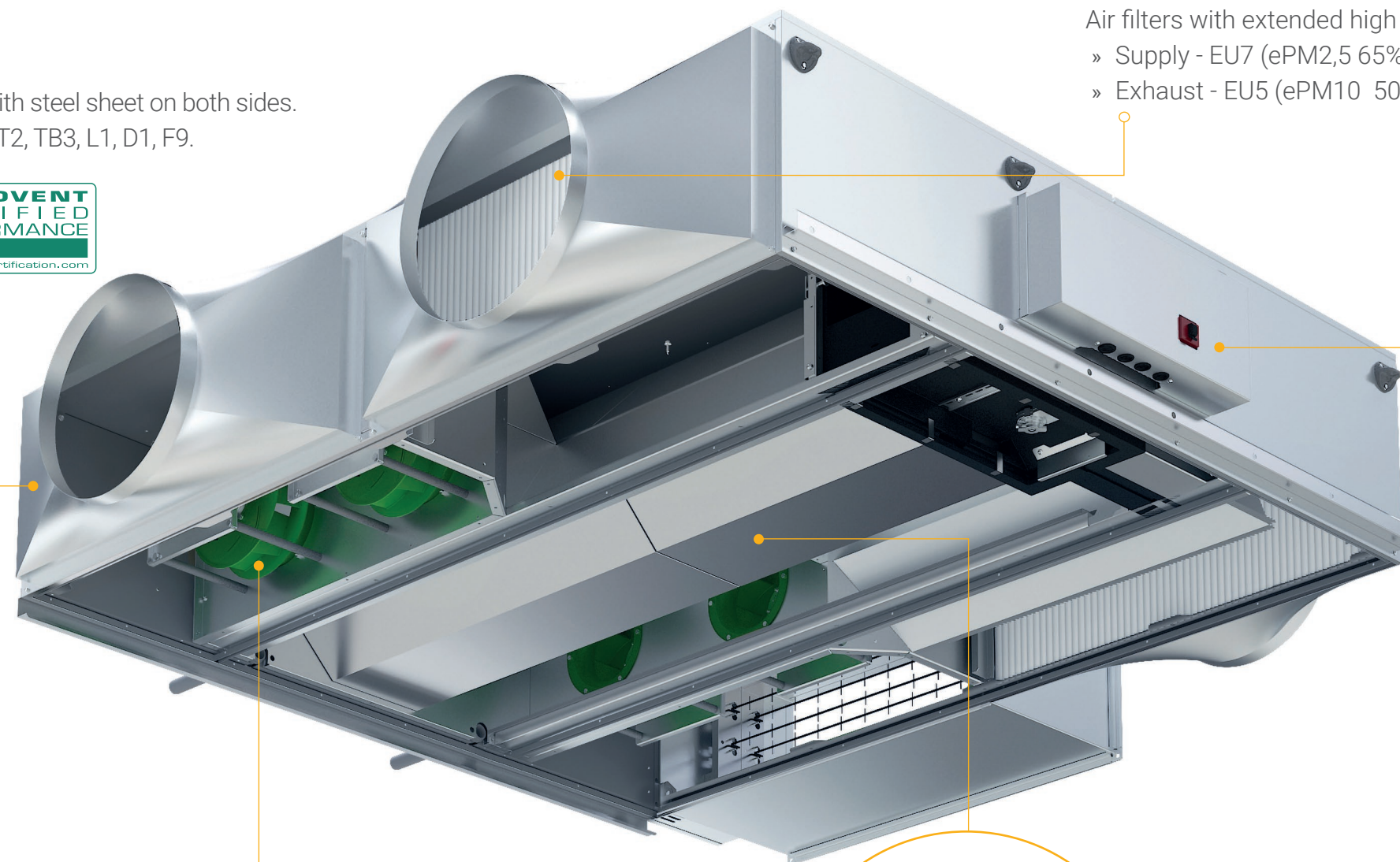


up to **93%**
drive efficiency

MINI-PLEAT FILTERS

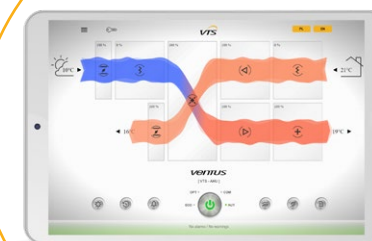
Air filters with extended high efficiency filtration surface.

- » Supply - EU7 (ePM2,5 65%)
- » Exhaust - EU5 (ePM10 50%)



ENERGY RECOVERY

- » Highly efficient counterflow hex recovery with by-pass.
- » Recovery efficiency reaching 93%



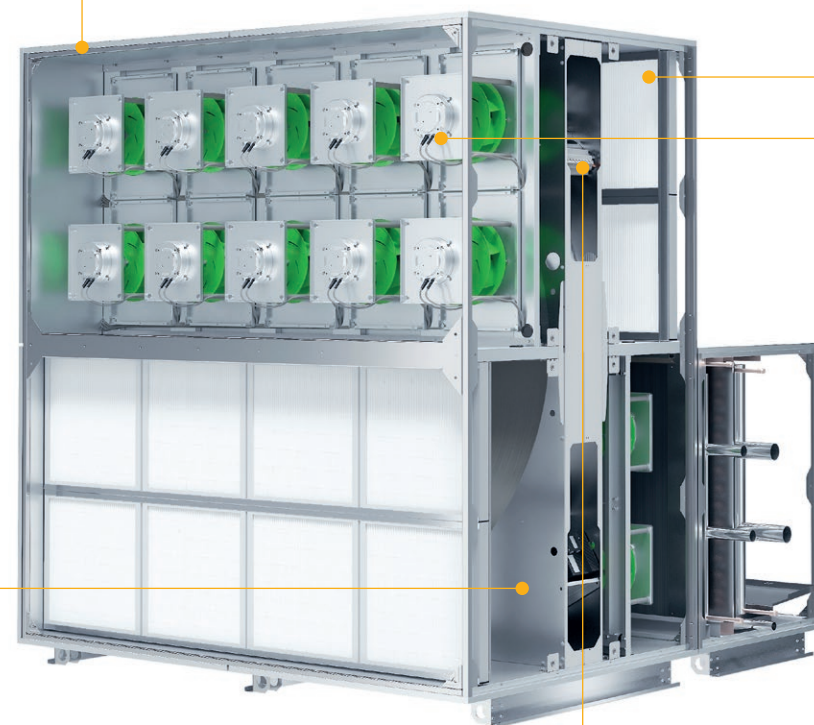
CONTROLS

Multifunctional controls, integrated with the unit – fully pre-configured and ready to run.

VENTUS COMPACT FLOOR-MOUNTED UNITS

CASING

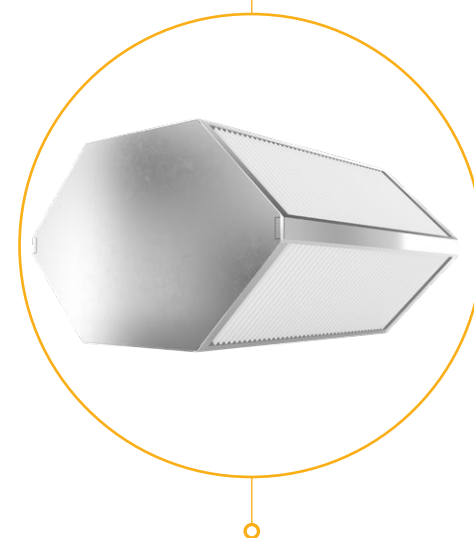
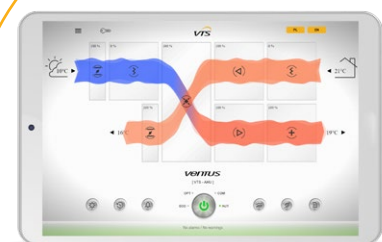
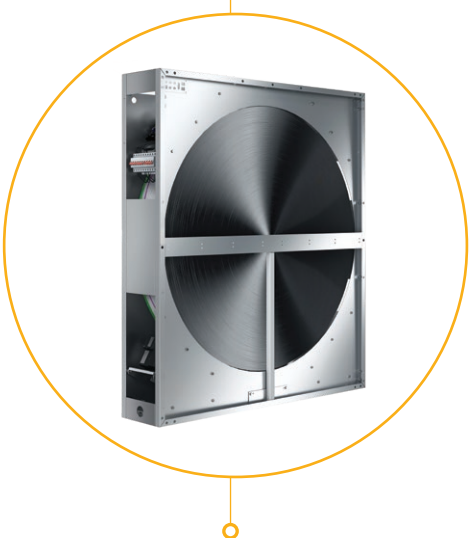
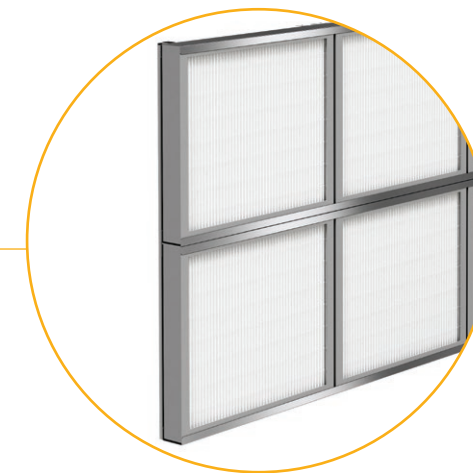
- » Panels filled with mineral wool, closed with steel sheet on both sides.
- » Casing parameters according to EN 1886: T2, TB3, L1, D1, F9.



MINI-PLEAT FILTERS

High performance filters with wide active filtration cross-section.

- » Supply - EU7 (ePM2,5 65%)
- » Exhaust - EU5 (ePM10 50%)



up to **93%**
drive efficiency

ENERGY RECOVERY

- » Highly efficient heat wheel driven by EC motor.
- » Recovery efficiency reaching 86%

CONTROLS

Multifunctional controls, integrated with the unit – fully pre-configured and ready to run.

ENERGY RECOVERY

- » Highly efficient counterflow hex recovery with by-pass.
- » Recovery efficiency reaching 93%

EC MOTORS

Efficient, silent and low vibrations fan with electronically commutated motor in a IE4 class.


VENTUS COMPACT

SUSPENDED AIR HANDLING UNITS

Base unit overall data

Unit size	Nominal airflow	Airflow range	Height	Width	Duct connection heigth	Duct connection width
	[m³/h]	[m³/h]	[mm]	[mm]	[mm]	[mm]
VVS005s	500	150 - 650	400	790	318	335
VVS010s	1000	300 - 1100	400	1150	318	515
VVS015s	1500	450 - 1650	400	1550	318	715
VVS020s	2000	600 - 2200	490	1610	408	743
VVS030s	3000	900 - 3300	490	2160	408	1018

Section length

Unit size		F	H	C	HC
	Base unit	Additional air treatment functions			
	[mm]	[mm]	[mm]	[mm]	[mm]
VVS005s	1230	200	200 - 460	370 - 460	460 - 920
VVS010s	1500	200	200 - 460	370 - 460	460 - 920
VVS015s	1500	200	200 - 460	370 - 460	460 - 920
VVS020s	1828	200	200 - 460	370 - 460	460 - 920
VVS030s	1828	200	200 - 460	370 - 460	460 - 920

Duct accessories

Dimmension WxH [mm]	VVS005s	VVS010s	VVS015s	VVS020s	VVS030s
Flexible connection	305x288	485x288	685x288	730x375	1005x375
Air damper	305x288	485x288	685x288	730x375	1005x375
Rectangle spigot	330x310/300x300	510x310/400x350	710x310/400x350	740x400/500x400	1015x400/800x400
Rounded spigot	330x310/355	510x310/355	710x310/355	740x400/450	1015x400/450

VENTUS COMPACT

FLOOR MOUNTED AIR HANDLING UNITS

Base unit overall data

Unit size	Nominal airflow	Airflow range	Height	Width	Duct connection heigth	Duct connection width
	[m³/h]	[m³/h]	[mm]	[mm]	[mm]	[mm]
VVS021c	2100	840 - 2310	991	967	345	860
VVS030c	3000	900 - 3300	1255	967	480	860
VVS040c	4000	1200 - 4400	1255	1174	480	1065
VVS055c	5500	1650 - 6050	1525	1345	615	1235
VVS075c	7500	2250 - 8250	1765	1486	735	1380
VVS100c	10000	3000 - 11000	1965	1666	835	1560
VVS120c	12000	3600 - 13200	2039	1897	870	1790
VVS150c	15000	4500 - 16500	2241	2091	970	1985

Height includes 90 mm base rail

Base unit lengths

Unit size						
	[mm]	[mm]	[mm]	[mm]	[mm]	[mm]
VVS021c	1240	1080	1080	2 230	2 230	2 500
VVS030c	1240	1080	1080	2 230	2 230	2 500
VVS040c	1240	1080	1080	2 230	2 230	2 500
VVS055c	1240	1080	1080	2 290	2 290	2 560
VVS075c	1240	1080	1080	2 530	2 530	2 800
VVS100c	1300	1300	1080	2 570	2 570	2 800
VVS120c	1300	1300	1080	2 670	2 670	2 900
VVS150c	1300	1300	1080	2 730	2 730	2 940

Additional section length

Unit size	F	H	C	HC	S
	[mm]	[mm]	[mm]	[mm]	[mm]
VVS021c	310	310 - 710	370 - 710	710	1080
VVS030c	310	310 - 710	370 - 710	710	1080
VVS040c	310	310 - 710	370 - 710	710	1080
VVS055c	310	310 - 630	450 - 790	790	1080
VVS075c	310	310 - 630	450 - 790	790	1080
VVS100c	310	310 - 630	890	890	1080
VVS120c	310	310 - 630	890	890	1080
VVS150c	310	310 - 630	920	920	1080

VMS – VENTUS MANAGEMENT SYSTEM

VTS supplies control system with a factory-implemented application for remote monitoring and management of the operating parameters of the units in real time via a web browser on any mobile device.

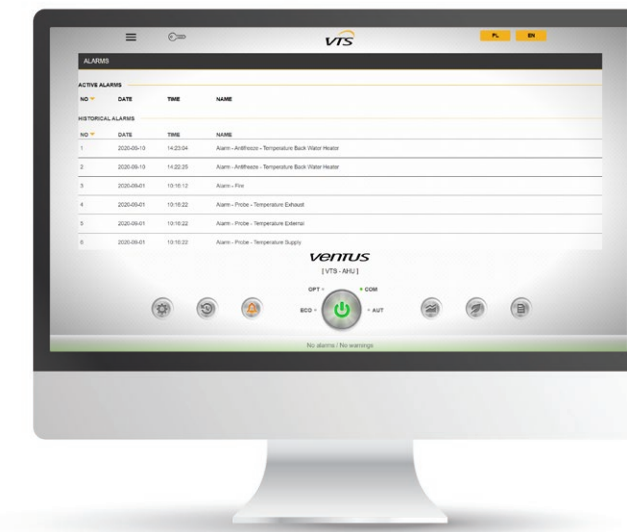
VENTUS MANAGEMENT SYSTEM:

- » Monitoring and management of the majority of devices from the open visualisation of a single unit,
- » Easy and intuitive change of the operating mode of the unit using a central button,
- » Displaying visualisations on any devices - from PC to mobile devices,
- » Tools for supporting easy and quick setup of the optimal operating schedule of the unit.



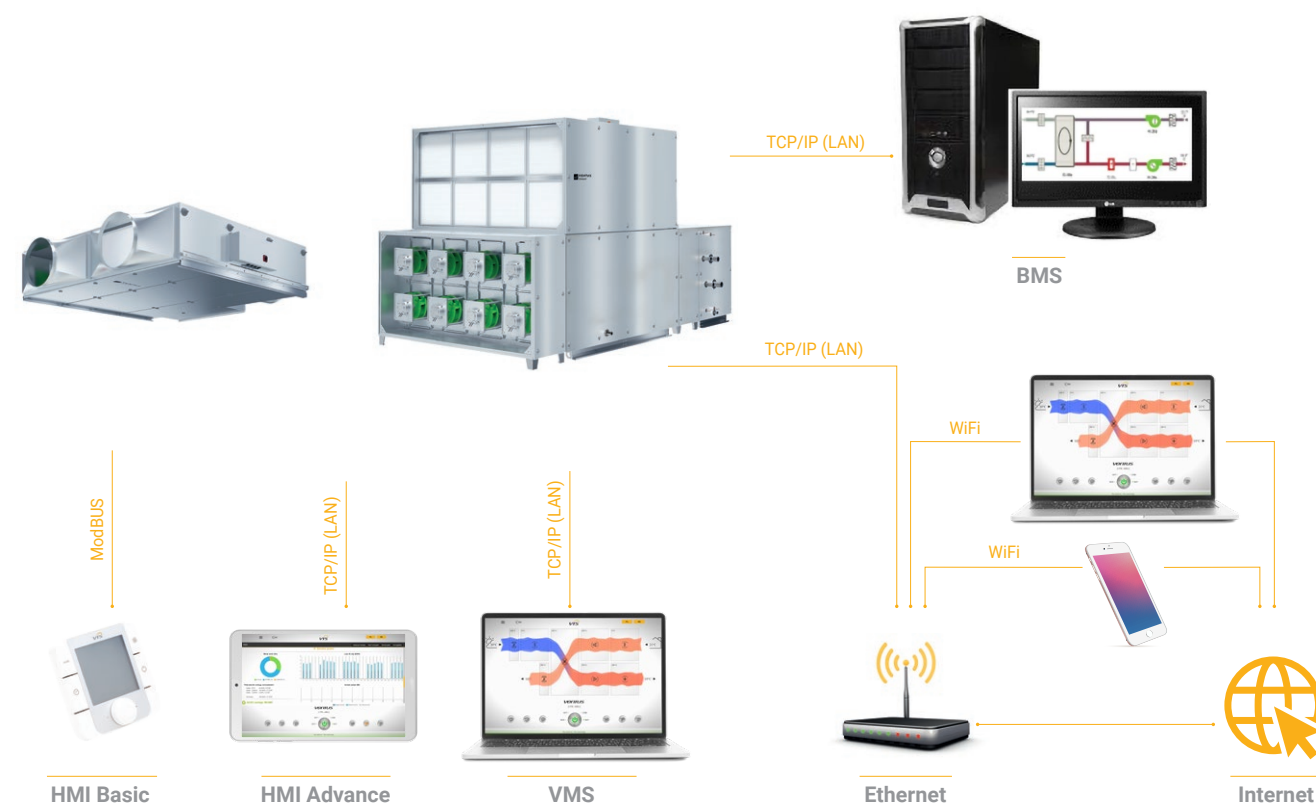
Graphical operation calendar:

- » Changing time intervals using sliders



Faults and alarms handling:

- » Clearing alarms
- » Alarm logging



Charts of unit's operation:

- » Two charts – main and secondary
- » Free selection of the set of parameters for monitoring and assigning them to selected ranges



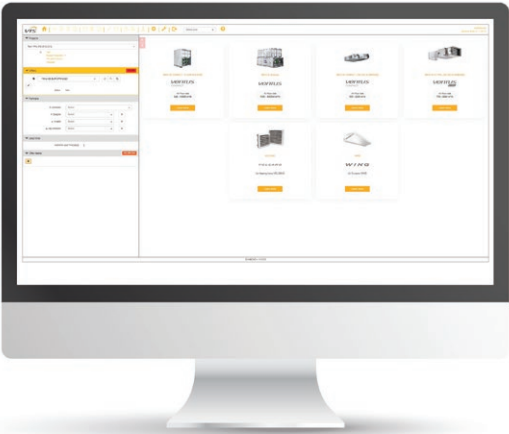
Analysis of savings resulting from the operating scenario used:

- » Graphical representation of the use of particular energy media
- » Costs and savings shown in any currency.

CLIMACAD ONLINE 4.0 (CCOL 4)

Customized configuration

Integrated savings calculator



Intuitive selection assistant step by step

Integrated with CRM, ERP, WMA system

CCOL4 IS COMPATIBLE WITH:

» all browsers



» all operating system



» all devices



DATA EXPORT TO

 PDF

 CAD 2D

 CAD 3D



 SUBMITTAL

 QUOTATION

 TECH CARD

VTs BIM - A NEW APPROACH TO DIGITAL MODELS OF AIR-HANDLING UNITS

VTs has created a possibility of dynamic online generation of digital models of the units VENTUS VVS, VENTUS Compact and American VENTUS AVS. This is possible due to the launch of the new ClimaCAD OnLine 4.0 product selection program that features an .rfa [Revit®] file generator









Generated objects contain detailed parameters connectors:

- » air systems
- » hydraulic systems
- » sanitary systems
- » electric systems

as well as the complete dimensional data, including unit's maintenance and service (repair) zone.

VTs also provides digital models of WING air curtains and VOLCANO air heaters.

The models contain:

- » parametrized electric and hydraulic connectors,
- » mount options vertically and horizontally,
- » presentation of the range of air stream,
- » parameter of any inclination angle of an air heater in relation to the horizontal plane.

Models can be downloaded from: <https://vtsgroup.com/vts-bim>



ZDROFIT GYM



GREEN CAFFE NERO





VTS Group Headquarters location and contact

VTS Group Headquarters

VTS Group S.A.

20, rue de l'Industrie
L-8399 Windhof, **Luxembourg**
Phone: +352 20 60 22 41

Contact

VTS Sp. z o.o.

Olivia Tower
Al. Grunwaldzka 472 A
80-309 Gdańsk, **Poland**
T: +48 (58) 628 13 54
F: +48 (58) 628 13 22
vtsgroup@vtsgroup.com

www.vtsgroup.com

Due to continuous improvement of the products, VTS reserves right to implement modifications. Some of technical data and descriptions may vary from the actual products specification. Before placing the order, please, confirm all technical specification with VTS sales representative.